



# BOSCH

Access Control Systems



# kepware®

## Industrial Automation

# Integrated Security, Safety and Video Management Solution with Kepware

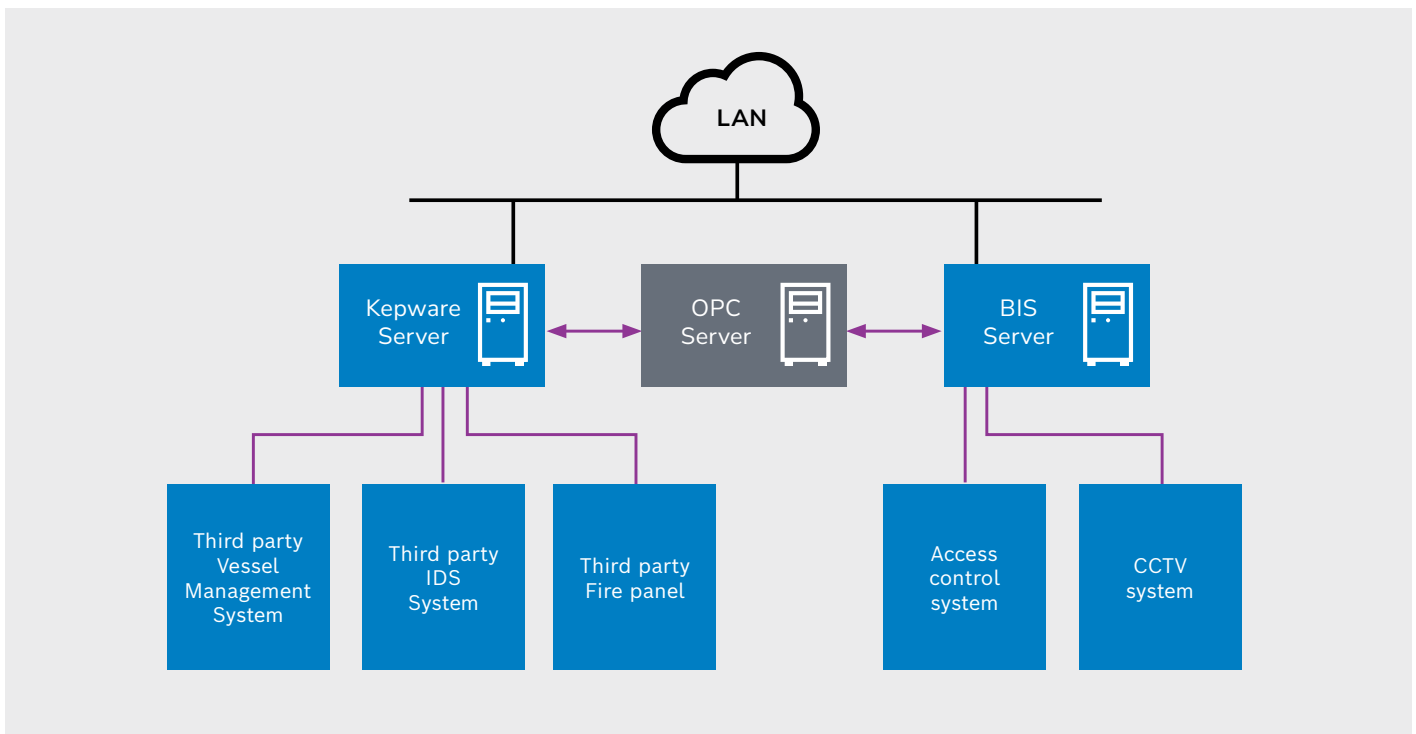
Kepware's KEPServerEX is the industry's leading connectivity platform that provides a single source of industrial automation data to all of your applications. The platform design allows users to connect, manage, monitor, and control diverse automation devices and software applications through one intuitive user interface. The Bosch [Building Integration System \(BIS\)](#) is a flexible alarm management system that connects to multiple subsystems such as CCTV, access control, fire system, intrusion detection and public address system, while the Bosch [Video Management System \(BVMS\)](#) provides a powerful video control environment coupled with on-the-edge technologies of IP cameras.

Kepware's KEPServerEX enables Bosch BIS and Bosch VMS to communicate with a multitude of different subsystems like Building Management Systems, SCADA systems, BACnet, etc. With a library of 150+ device drivers, client drivers, and advanced plug-ins, KEPServerEX is the industry's leading provider of asset connectivity on the market.

- Bosch BIS and Bosch VMS integrates with Kepware's KEPServerEX® through OPC
- KEPServerEX links BVMS & BIS with any digital systems
- KEPServerEX enables BIS and BVMS to communicate with 300 third party systems (BACNet, Modbus, etc.)
- KEPServerEX is designed to integrate quickly between systems
- Bosch BIS and Bosch VMS are linked to Big Data/ Data Analytic platforms through KEPS

## Compatibility

Kepware	Bosch products
KEPServerEX	Video Management System (BVMS) 5.5 and higher
	Building Integration System (BIS) 4.2 and higher





Energy



IT / Data Center



Critical infrastructure



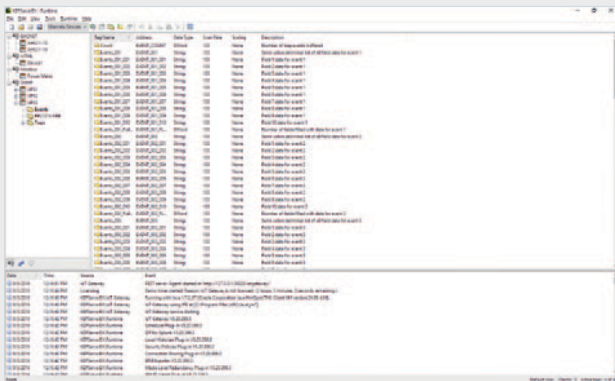
Industry

The images and verticals have been modernised.. Please check

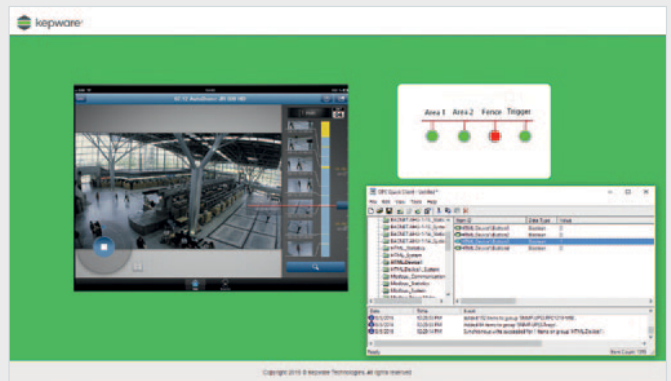
## Key features

- Gateway to any systems
- Integration Simplicity
- Multiple ready-made drivers
- BMS Integration
- Data Analytics/Big Data
- Security system as sensor

## Installation / configuration notes



KEPServerEX user interface with Project Configuration, Administration and Event Log



Bosch Video Management System and KEPServerEX interface

At **KEENFINITY**, we are a globally leading provider of innovative security and professional communication solutions. With a heritage of quality and reliability, and a vision driven by innovation, we are shaping the future of communication, security, and manufacturing excellence. We exceed the expected. We proudly stand behind industry-leading brands such as Bosch, Electro-Voice, Dynacord, RTS and Telex – names that are synonymous with quality, reliability, and innovation. Whether it is ensuring security and peace of mind, delivering unparalleled audio experiences, or enabling clear and mission-critical communication, our technologies secure spaces, amplify voices, and deliver excellence.

For more information, visit [keenfinity-group.com](http://keenfinity-group.com)

**Kepware Technologies** is a software development business of PTC Inc., headquartered in Portland, Maine. Kepware provides a portfolio of software solutions to help businesses connect diverse automation devices and software applications and enable the Industrial Internet of Things. From plant floor to wellsite to windfarm, Kepware serves a wide range of customers in a variety of vertical markets including Manufacturing, Oil & Gas, Building Automation, Power & Utilities, and more. Established in 1995 and now distributed in more than 100 countries, Kepware's software solutions help thousands of businesses improve operations and decision making.

[www.kepware.com](http://www.kepware.com) does not work smooth

For more information, visit [ptc.com/en/products/kepware](http://ptc.com/en/products/kepware)