

## Video Management

# Hanwha Vision integrated monitoring solution

The integration of Wisenet SSM (Smart Security Manager) from Hanwha Vision with [Access Management System \(AMS\)](#) allows for a unified platform where video surveillance and access control coexist seamlessly, enabling operators to monitor live access events at doors while managing video feeds from a single interface. Wisenet SSM is an enterprise video management system (VMS) that centralizes the management of Hanwha Vision's NVRs, DVRs, and recording server software, providing a streamlined and intuitive user experience.

The robust architecture of Wisenet SSM, featuring distributed computing and clustered databases, ensures guaranteed reliability and scalability, supporting up to 28 servers and 2048 channels within a single domain, with the capacity to expand to thousands of cameras across multiple domains. This scalability is crucial for mid to large-scale environments, enhancing operational efficiency. Furthermore, the integration facilitates

powerful search capabilities, allowing users to quickly retrieve cardholder activities and door events for forensic analysis, which is invaluable for incident investigations. Operators can also control access doors directly from the VMS client, simplifying security management. By combining video and access management in one user interface, the integration enhances situational awareness and streamlines workflows, making it easier to maintain a secure environment.

In summary, the integration of Wisenet SSM with AMS provides a comprehensive security solution that maximizes operational efficiency, reliability, and flexibility, ensuring organizations can effectively manage their security needs in an increasingly complex landscape.

- Free 45 days trial version with full core features
- Integration into a single core server
- User friendly, intuitive UI design
- Active-Active Failover
- Dashboard for real-time system monitoring
- AI Video Search

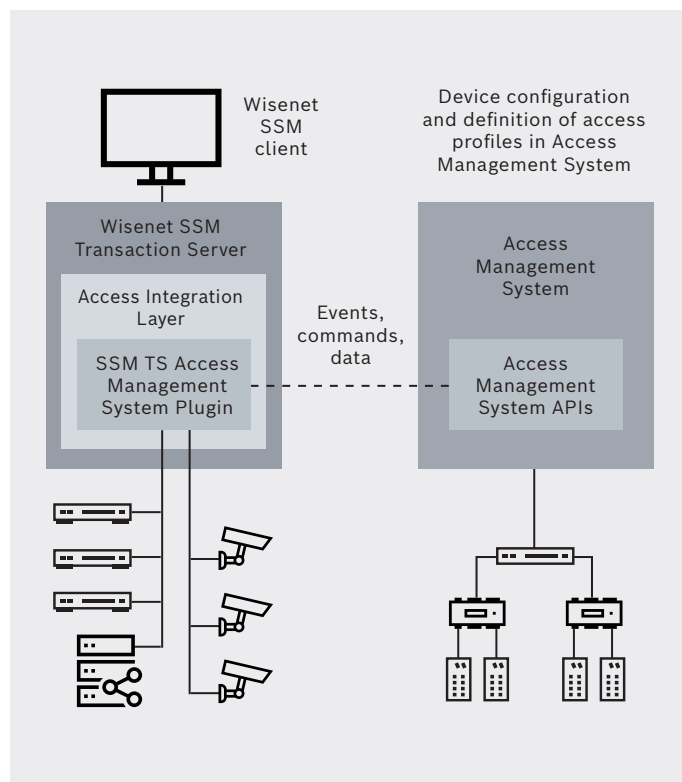
## Compatibility

### Hanwha Vision

SSM VMS V2.17 and higher along with SSM SSW-TS10L Transaction Server license

### Bosch products

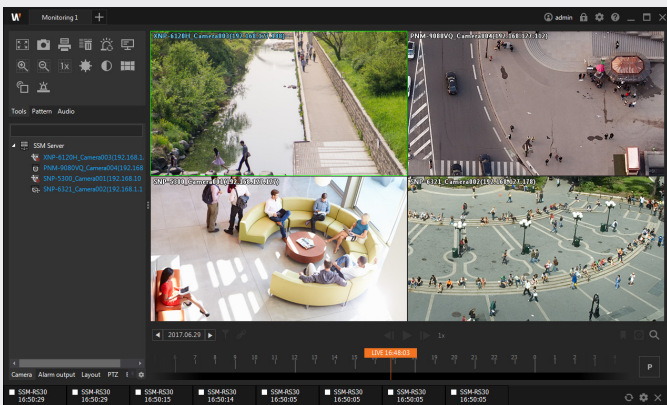
[Access Management System 5.2 and higher](#)



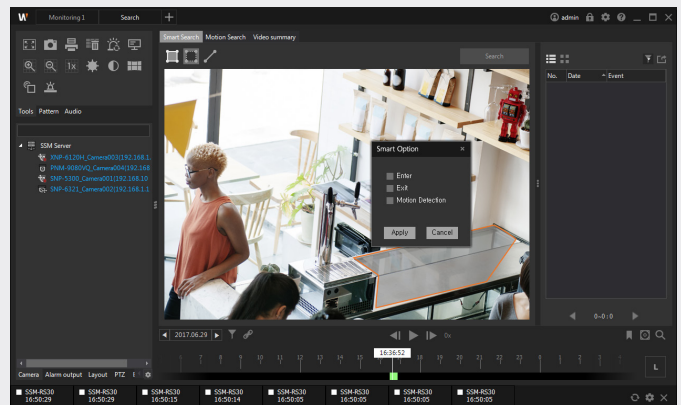


## Key features

- Video and access management in one user interface
- Live access monitoring for continuous overview of access events at doors
- Possibility to search for cardholder activities and activities at doors for forensic purposes
- Control access doors from VMS client



Live view



Smart search

At **KEENFINITY**, we are a globally leading provider of innovative security and professional communication solutions. With a heritage of quality and reliability, and a vision driven by innovation, we are shaping the future of communication, security, and manufacturing excellence. We exceed the expected. We proudly stand behind industry-leading brands such as Bosch, Electro-Voice, Dynacord, RTS and Telex – names that are synonymous with quality, reliability, and innovation. Whether it is ensuring security and peace of mind, delivering unparalleled audio experiences, or enabling clear and mission-critical communication, our technologies secure spaces, amplify voices, and deliver excellence.

For more information, visit [keenfinity-group.com](http://keenfinity-group.com)

For 30 years, **Hanwha** has been a global leader in video security, specializing in optical design, manufacturing, and image processing technology. Their products ensure safety and security worldwide, featuring outstanding performance, high reliability, and top-tier cybersecurity. Hanwha's growth stems from addressing customer needs, evolving to tackle broader business challenges. Their solutions empower customers to achieve their goals. Committed to innovation, Hanwha continually pushes the boundaries of video technology, ensuring competitiveness and success in vision solutions.

For more information, visit [hanwhavision.com/en/](http://hanwhavision.com/en/)